



Are you fishing for trouble?

VIBRIO INFECTIONS

Vibrio bacteria are naturally present in marine waters. The Centers for Disease Control & Prevention estimate 8,000 *Vibrio* infections and 60 deaths occur every year in the United States.

Are you at risk for serious infection?

Vibrio vulnificus is the most dangerous of *Vibrios* and can cause serious infection (50-67% fatality rate) in people with:

- Liver disease
- Diabetes
- Alcoholism
- Cancer
- Weakened immune systems
- Kidney disease or failure
- HIV / AIDS
- Stomach disorders
- Iron overload disease

*** People without these conditions are NOT at risk for serious infection.**

If you are unsure of your risk, consult your doctor.

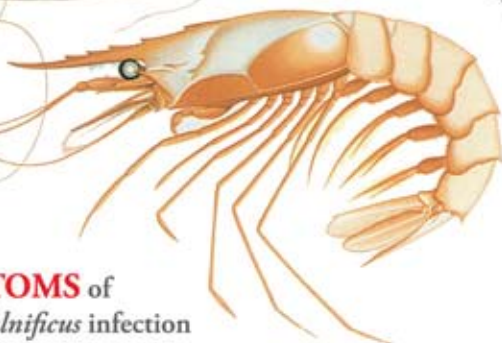


How do you become infected?

By exposing wounds to seawater or raw seafood and/or eating raw or undercooked oysters, clams, or mussels.

For more information, visit
www.SafeOysters.org

For more information, visit www.SafeOysters.org



SYMPTOMS of *Vibrio vulnificus* infection

usually develop within 3 to 48 hours and may include:

- Rapid swelling, pain, reddening of skin around wound
- Blisters, dead tissue around wound
- Fever/chills
- Nausea/stomach pain/vomiting/diarrhea
- Fluid accumulation, especially in legs
- Large blisters, sometimes blood-filled
- Bacterial infection in bloodstream
- Rapid drop in blood pressure (shock)
- Death

If you have one or more at-risk conditions and develop symptoms, SEEK IMMEDIATE MEDICAL TREATMENT.

AVOID INFECTION

- Eliminate or minimize exposure to seawater (especially in the Gulf of Mexico and South Atlantic)
- Protect wounds from seawater and avoid punctures, scrapes, or cuts while fishing and handling raw seafood
- Wear protective gloves and eyewear when shucking oysters
- Eat cooked seafood; avoid eating raw or undercooked oysters, clams, & mussels
- Do not contaminate cooked seafood with seawater or juices from raw seafood



Public Service & Outreach
THE UNIVERSITY OF GEORGIA

MAREX

The University of Georgia Marine Extension Service

Sea Grant
National